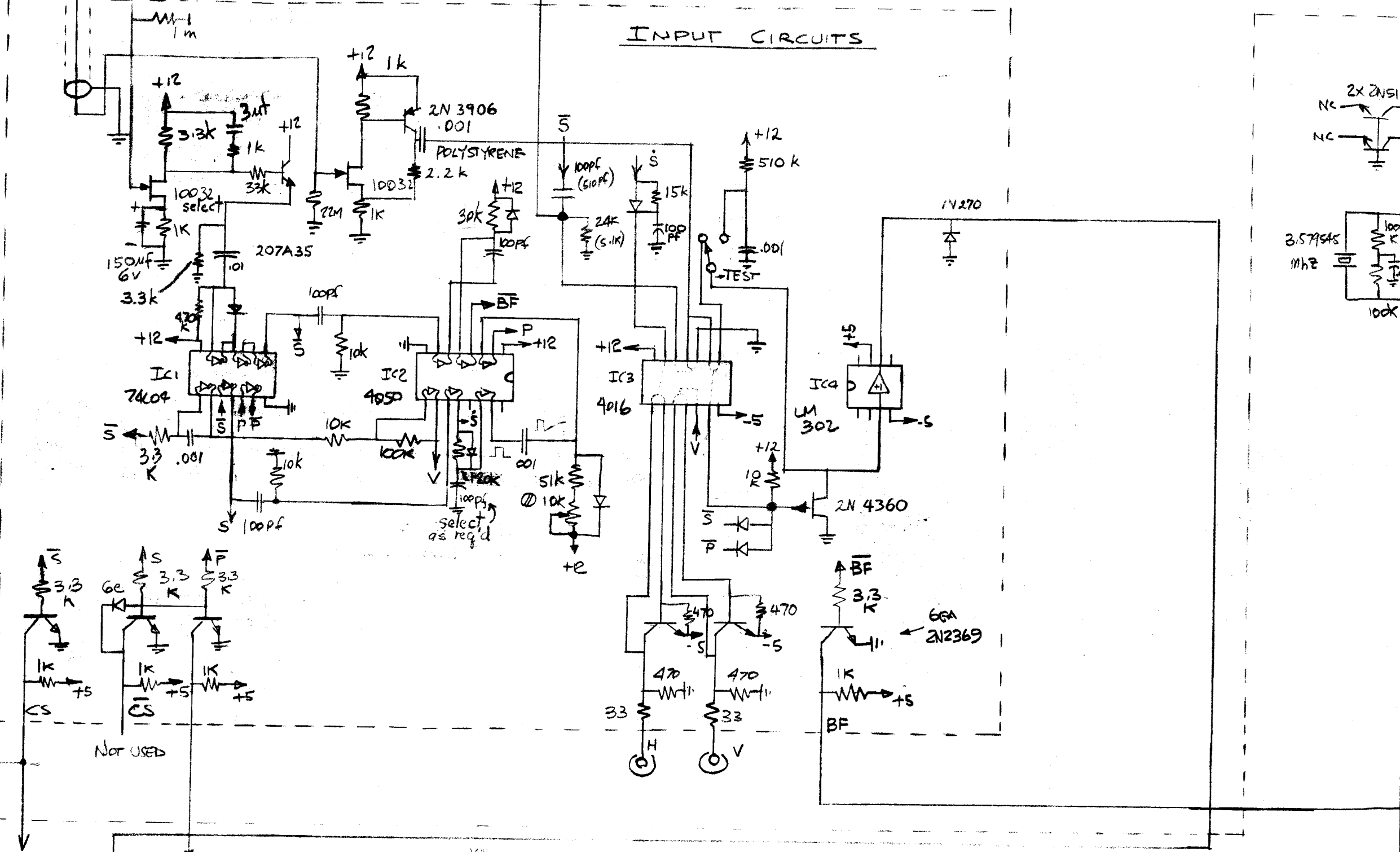


NOTES

$T_1 = 9.5 \mu s$ $T_2 = 52.39 \mu s$

$S = 4.76 \mu s$ NOM $\dot{S} = 0.6 \mu s$ NOM

$P = 11.1 \mu s$ BRZ = 0.5 μs BG = 2.24 μs

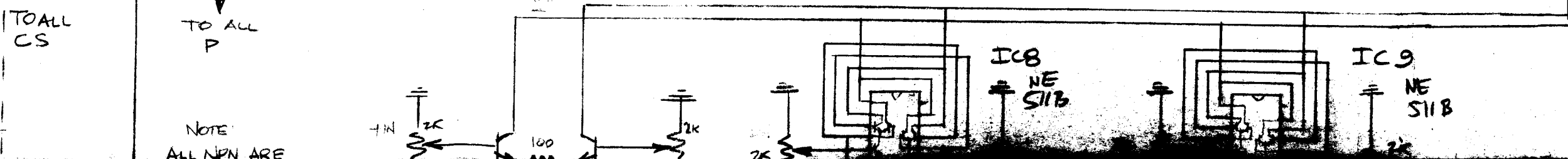


OUTPUT MODE

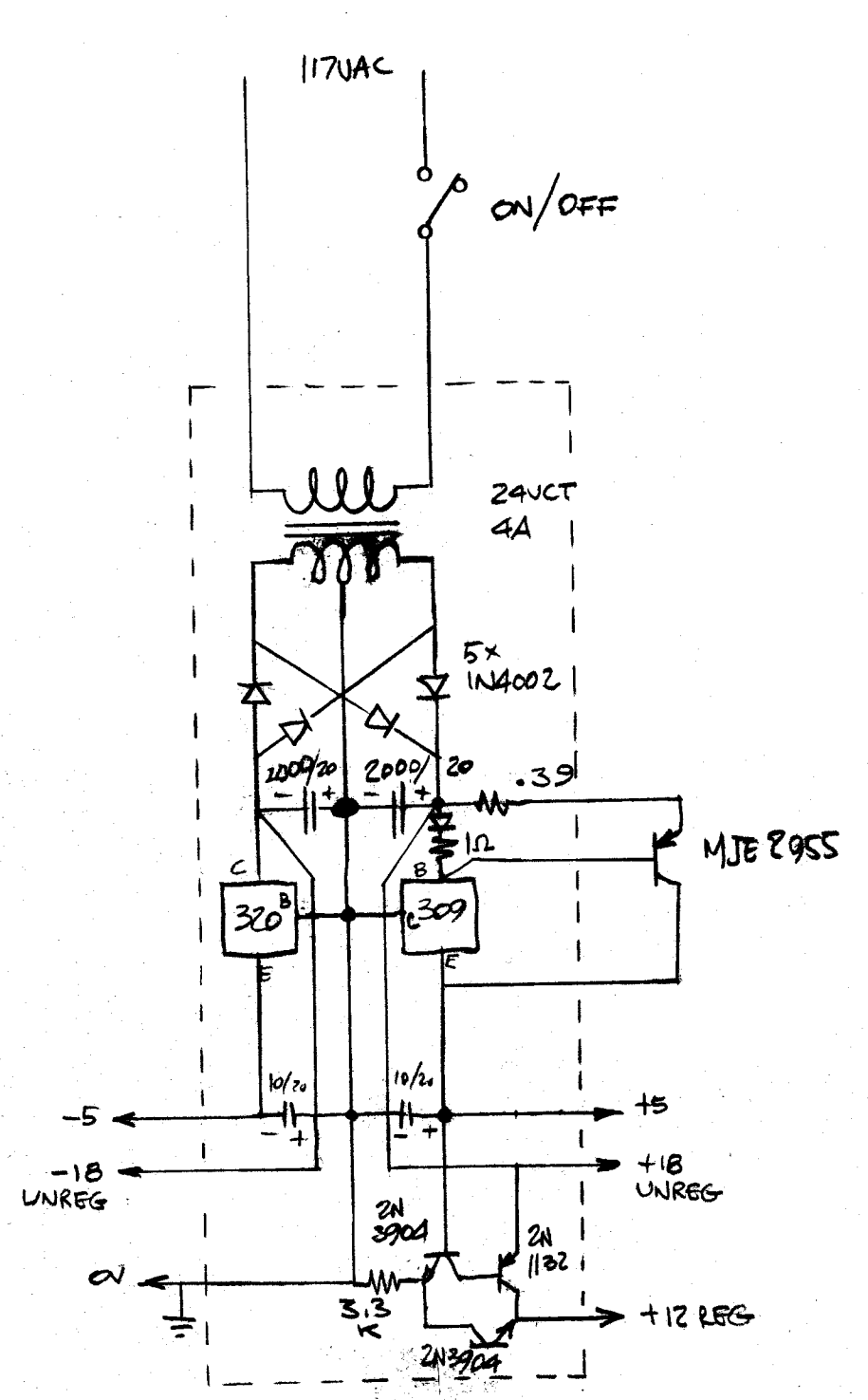
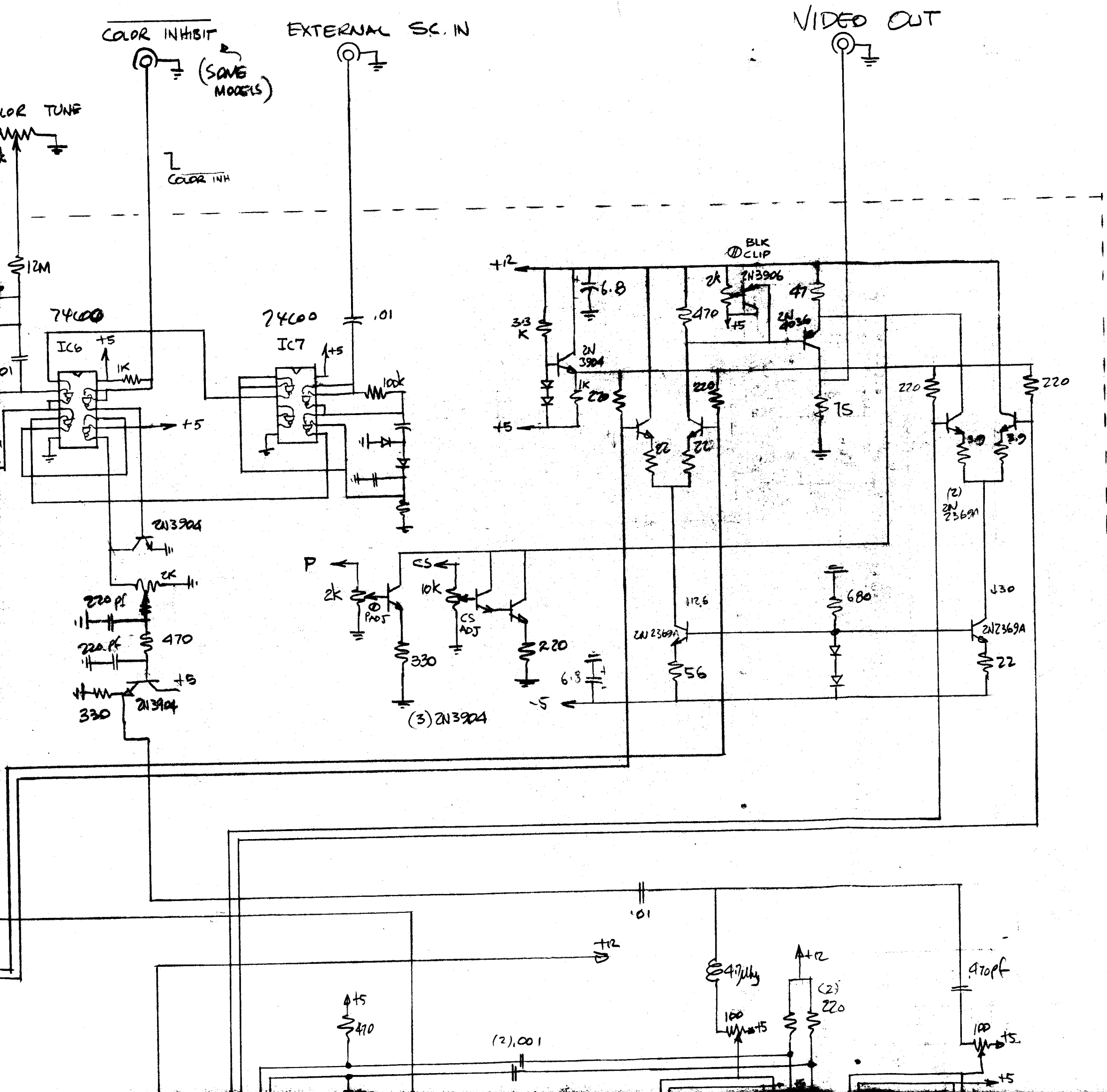
(SOME MODELS)

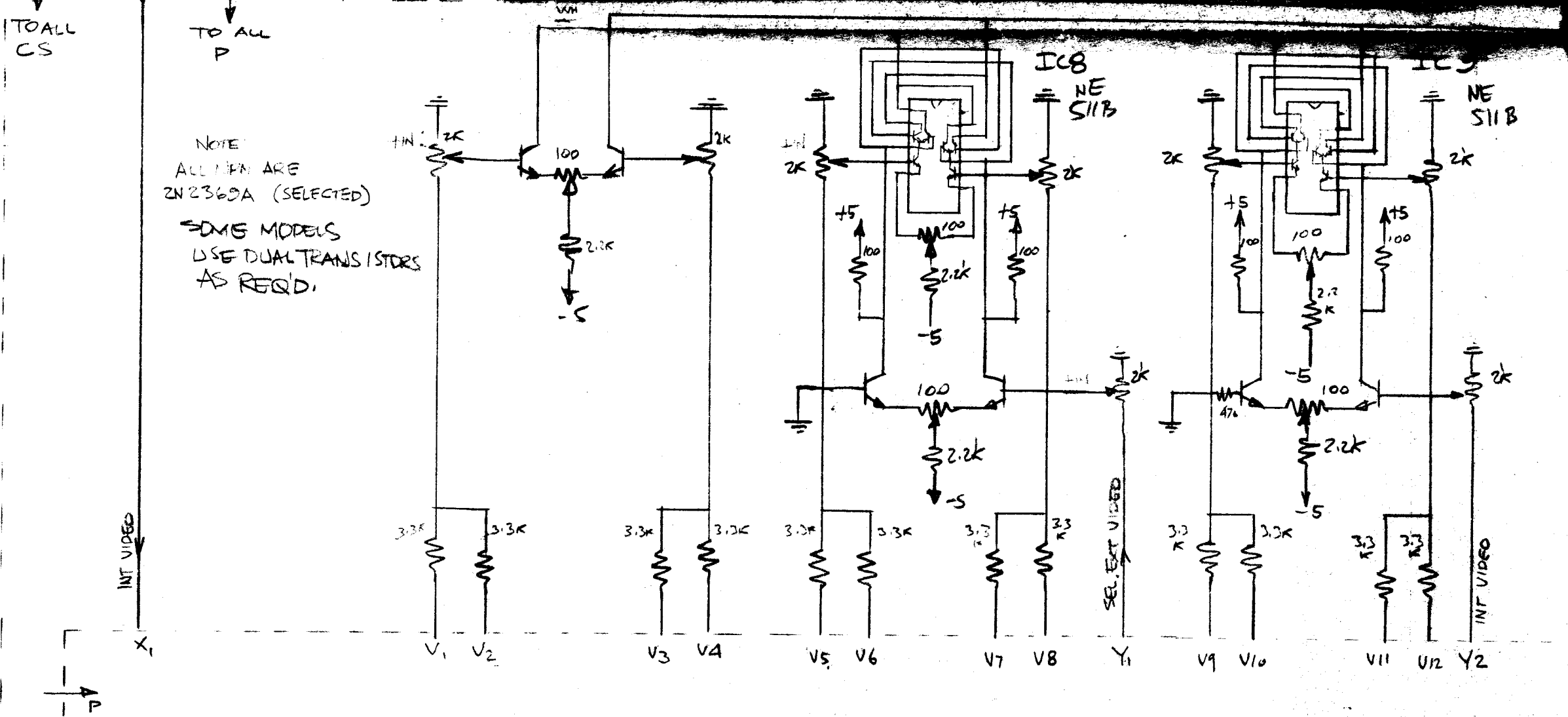
COMPOSITE

NON COMPOSITE



COMPOSITE ONLY

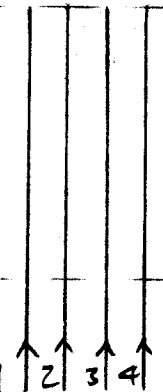




NOTES

1. Y, X ARE VIDEO SIGNALS, PDS WHITE
2. V= ARE CONTROL VOLTAGES
 0 → 2.5V (UNIPOLAR, SAT. ONLY)
 -2.5V → +2.5V (BIPOLAR, ALL OTHERS)

Z1, Z2, Z3, Z4

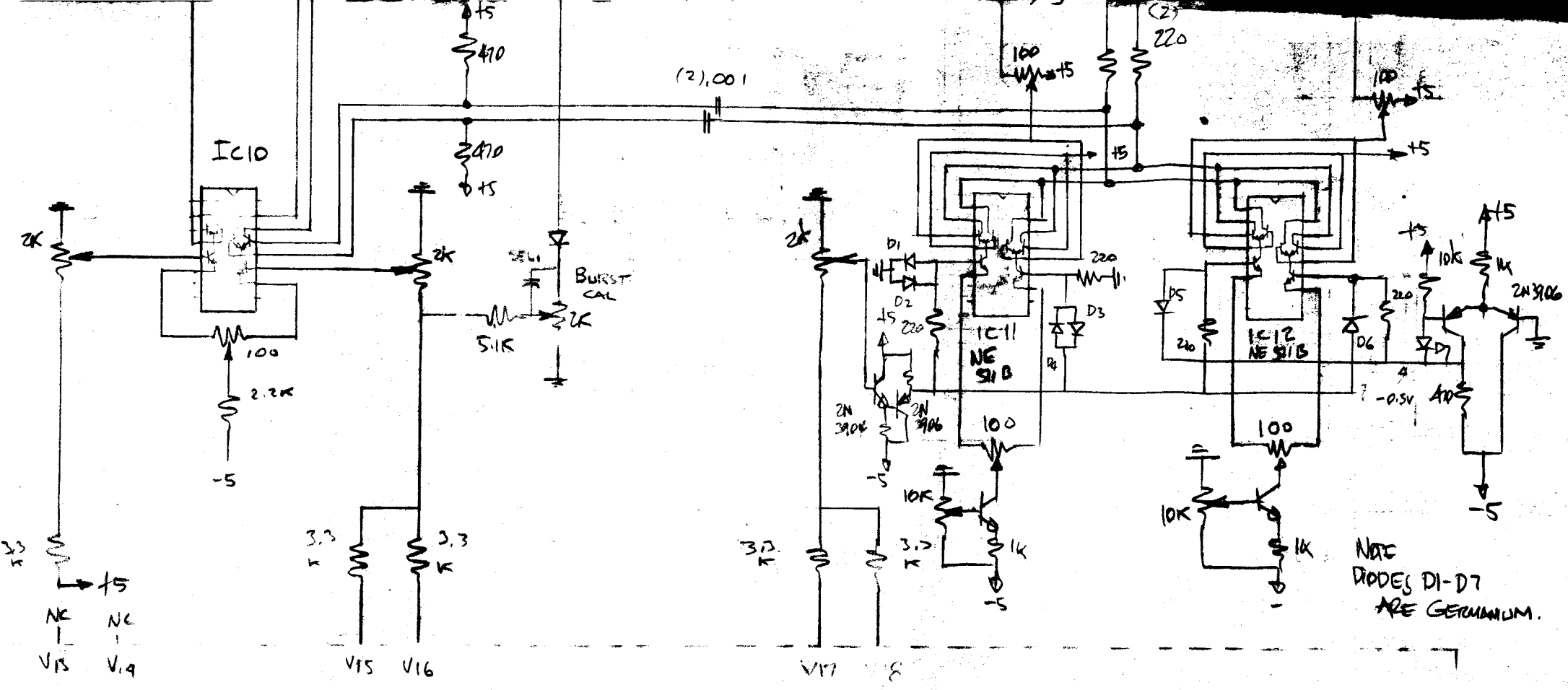


FROM KEY INPUT
BUFFERS

MAIN PLUG IN. LEVEL DISCRIMIN

NOTE: ALL CONTROL VOLTAGES
GO INTO CARD BY
16 PIN CONNECTORS

THIS DWG COPYRIGHT
NOT TO BE COPIED



NOTES

INTEGRATED CIRCUITS OF PROPRIETARY DESIGN AND SELECTION ARE UTILIZED IN THIS INSTRUMENT. THESE PARTS ARE AVAILABLE FROM E.A.B.

THIS UNIT CARRIES A TWO YEAR WARRANTY WHICH IS VOIDED IF THE USER ATTEMPTS ANY INTERNAL ADJUSTMENTS.

ANY NECESSARY ADJUSTMENTS SHOULD BE PERFORMED BY E.A.B. -

EXT VIDEO SYNC STRIP, ANALOG SWITCHES, C.V MIX ETC.

EAB BERK CA 94707

OUT PERMISSION.

ELECTRONIC ASSOCIATES OF BERKELEY		
SCALE:	APPROVED BY: WIE. HEARN	DRAWN BY: WJ
DATE:		REVISED
VIDEO COLORIZER 200-400		
		DRAWING NUMBER BV 1