

bac (biennale d'art contemporain)
maison de lyon, place bellecour,
69002 lyon, france

May 5th 1994

téléphone: 72 40 26 26
Fax: 78 38 28 92
lyon, le

Woody and Steina VASULKA
Route n° 6
Box 100
Santa Fe, NM, 87501
USA

Dear Sir,

We are organizing in Lyon, France the 3rd Biennale of Contemporary Art. It will take place from December 1995 until February 1996 and will inaugurate the new Lyons Museum of Contemporary Art built by Renzo Piano.

In 1995, the Biennale will focus on the international video creation, the computerized image, the virtual reality and the film. It will be its own manner to celebrate the "first century of the cinematograph".

The Artistic Direction is under the responsibility of Thierry Prat, Thierry Raspail and Georges Rey.

We are most interested by your work. Could you please let us know what your projects for the years 1994/1995 are, and what your future productions are ?

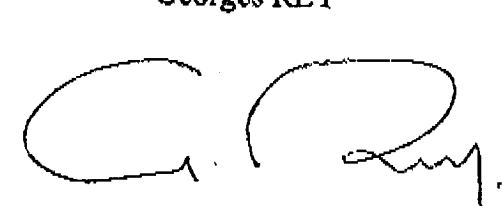
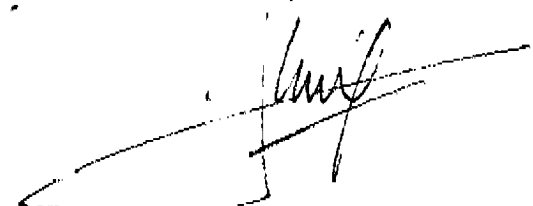
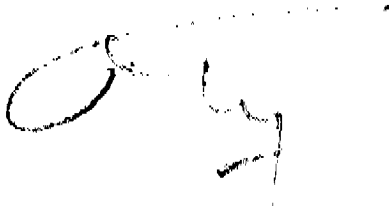
We would be most happy to receive any working material or video from you. We will send them back to you.

Awaiting your reply,
Yours Very Sincerely,

Thierry PRAT

Thierry RASPAIL

Georges REY



les festivals internationaux de lyon
et rhône-
alpes) **lyon**

THE VASULKAS

Friday, March 17, 1995

Messieurs Prat, Raspail et Rey
Biennale d'art contemporain
Maison de Lyon, Place Bellecour
69002 Lyon, France

Dear Messieurs Prat, Raspail et Rey,

Thank you for your fax of March 16th. We appreciate your prompt reply to our questions. At this time, however, we need more information. How is the space for our installation defined? Is it a contained room or part of a larger space? May partitions be built? Could you please send us a floor plan, a perspective drawing or a diagram indicating the space allotment? If the space permits, we may want to increase the scope of our installation to include extended material from the period.

Either Woody or Steina will come to the Biennale unless you have a specific need for both of them to participate. Please let us know your thoughts on this.

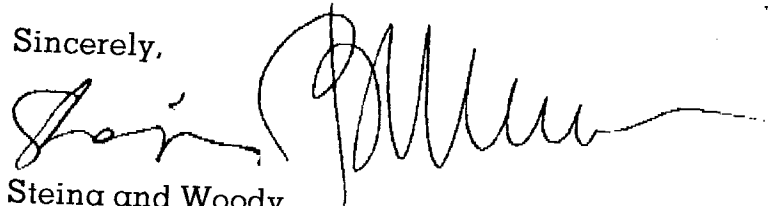
We are still debating whether it will be necessary to bring a technical assistant from the U.S. who is familiar with our installations or if we could rely on your technical resources. We are beginning to design the Lyon version of Machine Vision which will be finalized soon after we have received specific information about the space from you. We will also inform you how much of an advance we will need from the budget to realize additions to the installation.

If the necessary equipment is on location at least five days prior to the opening of the show, we are confident that the installation may be assembled during that time.

At this point, we plan to ship the necessary equipment for the installation from the Vasulkas' in Santa Fe. We will let you know as the project progresses whether we will need you to supply some specific equipment, such as transformers, stands, cabinets, carpets, etc.

We look forward to hearing from you soon. Please remember that we leave for Europe on April 1st.

Sincerely,



Steina and Woody

Date: Sat, 28 Sep 96 12:22:59 MDT

X-Length: 00000a24

Status: N

X-Sender: woodyv@santafe.edu (Unverified) Mime-Version: 1.0

To: steim@xs4all.nl (STEINA)

From: Woody Vasulka <woodyv@santafe.edu> Subject: cargo

To: Untitled Fine Arts Service (Baley)

From: Woody Vasulka

RE: Shipment to Czech Republic

CRATES height width length weight(Kg)

2 - 2200s 69 cm 61 cm 64 cm 43

4 - 2200s 69 cm 75 cm 117 cm 70

2 - 8000s 64 cm 62 cm 64 cm 56

5 - 8000s 69 cm 66 cm 122 cm 115

5 - 8000s 69 cm 66 cm 122 cm 115

Lyon Wood 74 cm 52 cm 169 cm 116

Metal 61 cm 83 cm 12 cm 76

Wood (Mirror) 54 cm 15 cm 86 cm 16

Wood (Mirror) 54 cm 15 cm 86 cm 20

Plastic Tube 11.5 cm diameter x 191 cm long 10 Plastic Tube 11.5 cm diameter x 191 cm long 10

TOTAL 647Kg

(We may add to the existing crates additional material of about 10Kg)

Contents:

#2200s and 8000s refers to two different models of Pioneer Laserdisk players, each estimated for a replacement value of \$300 for a total of \$5,400

"Lyon wood" and "Metal" contains an art exhibit titled "Machine vision" with replacement value for both crates. \$22,000

Two "Mirror" boxes contain split beam mirror assemblies @ \$400 each \$800

Plastic Tubes @ \$300 each (screens & frames) \$600

Disk Synchronizer, replacement value \$900

Media, (7 Laser disks) replacement value \$2,100

TOTAL value estimated at US \$31,800

biennale d'art contemporain
de lyon**MAISON DE LYON
PLACE BELLECOUR
69002 LYON
FRANCE
T : (33) 72 40 26 26
F : (33) 78 38 28 92****DE :
FROM :****MARIE LAURE FOLLET****A :
TO :****Steina VASULKA****NUMERO :**

19 1 505 473 0614

DATE :

January 15th 1995

**NOMBRE DE PAGES :
NUMBER OF PAGES :**

Dear Steina,

Many thanks for your fax.

Yes, I do have some of the parts broken and I am just getting a new glass tube.

It was just for written confirmation on your part.

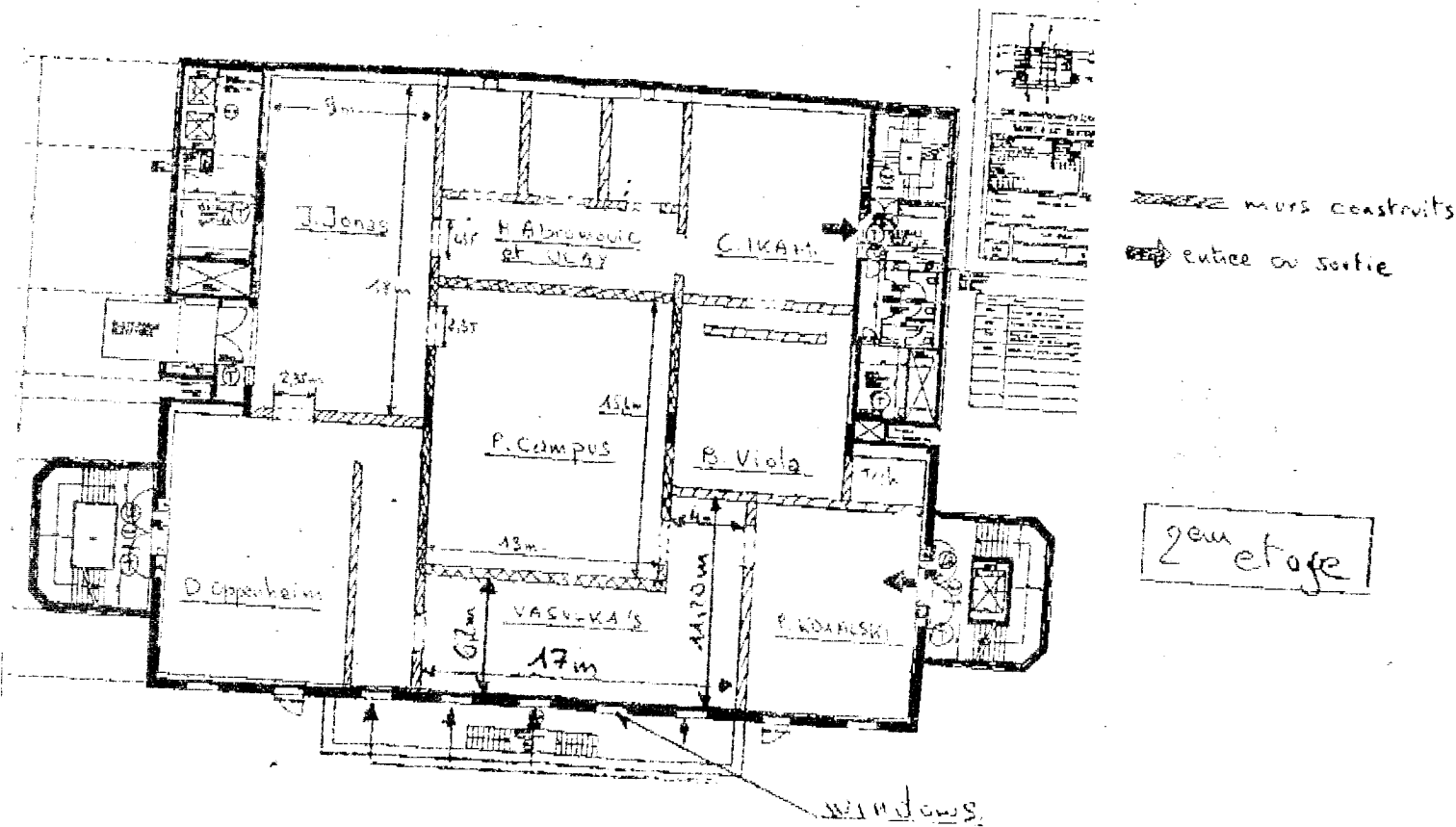
Yours Sincerely,

**Marie Laure Follet
Responsible for Insurance and Transport**

LYON'S BIEN-ETRE

95

to Steind
from T. Raspail



LYON MUSEE D'ART CONTEMPORAIN Second floor.

lengths 17m and 11,20m.

widths: 6,2m and 4m.

ceiling: 2,35m.

height: 5m.